



# Westminster Project - Street Environment, Providence, RI



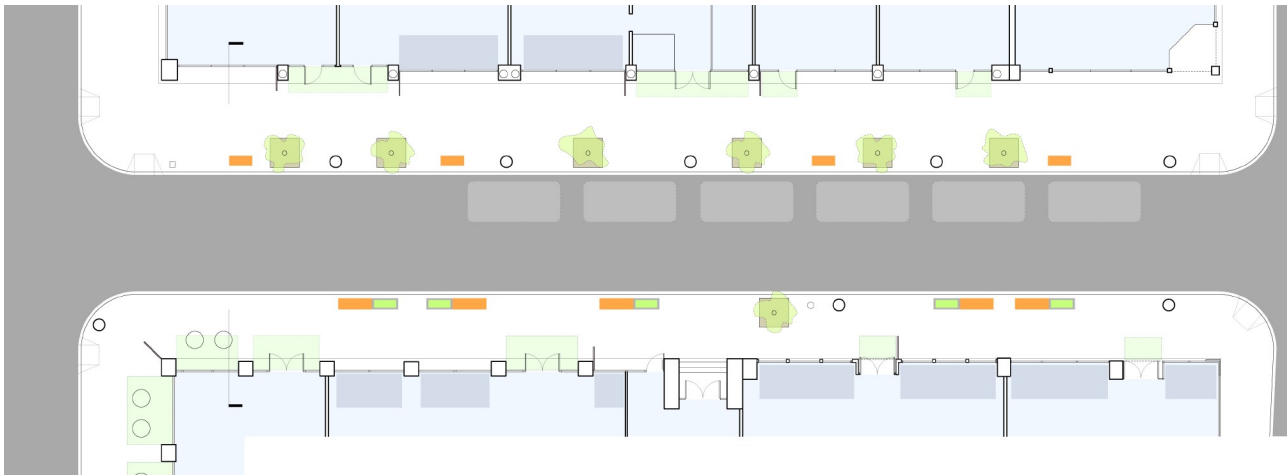
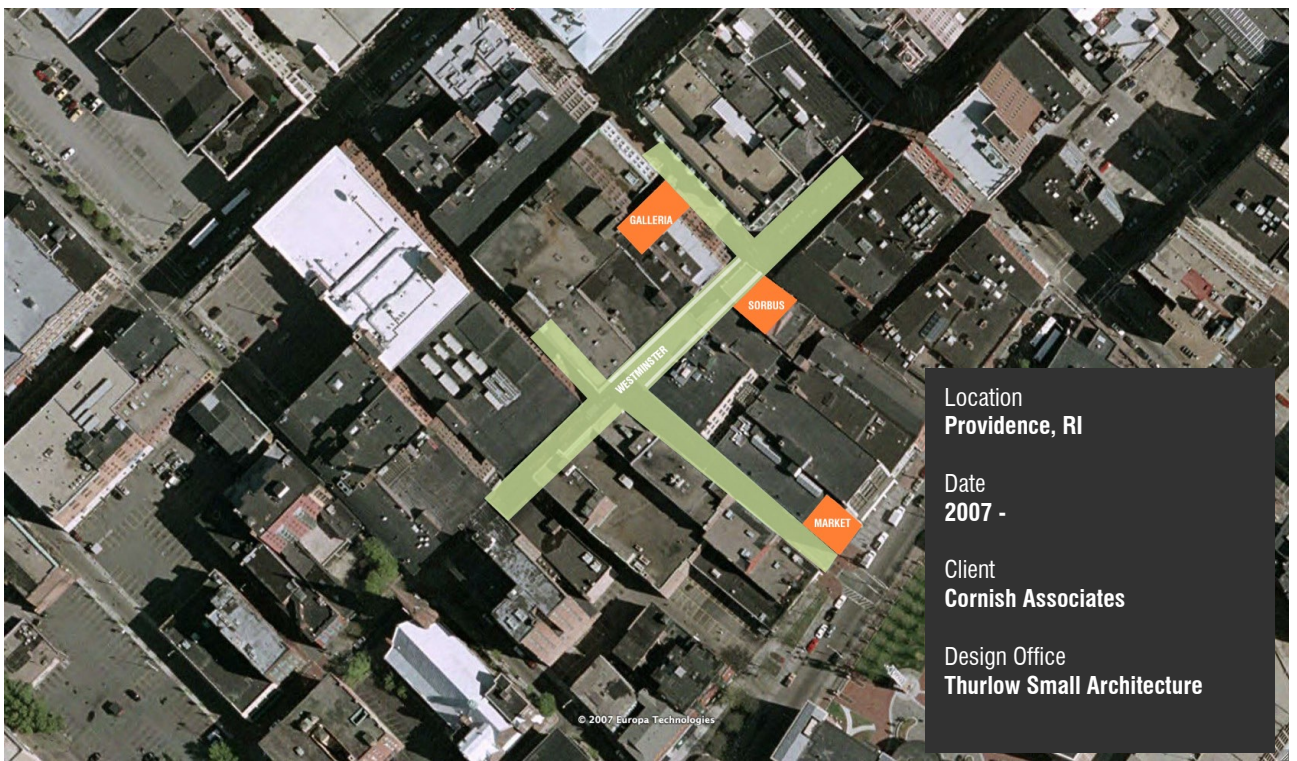
Westminster Street is the center of a new inhabitation of Providence's urban environment. Cornish Associates, the developer largely responsible for its rehabilitation, have asked TSA to develop a series of interior and exterior projects with them that are shown in the following pages. This mission, of revitalizing the historic city from a contemporary perspective, begins to transform what would normally be "New Urbanism" into an authentic evolution of character and space. We support redevelopment of the urban core as a critical component to Providence's future, but only as a true expression of time, materials, ideas, life, complexity and culture that are here now. This project looks at all aspects of urban development: programming, design, environment, culture, real estate, economics, and sustainability.

The Westminster Project involves four components:

- **Street Environment**, signage, awnings, seating and plantings
- **Sorbus**, a new clothing store
- **The Peerless Galleria**, incubator office spaces
- **The Providence Market**, neighborhood deli/grocery







# Westminster Project - Sorbus Clothing Store, Providence, RI



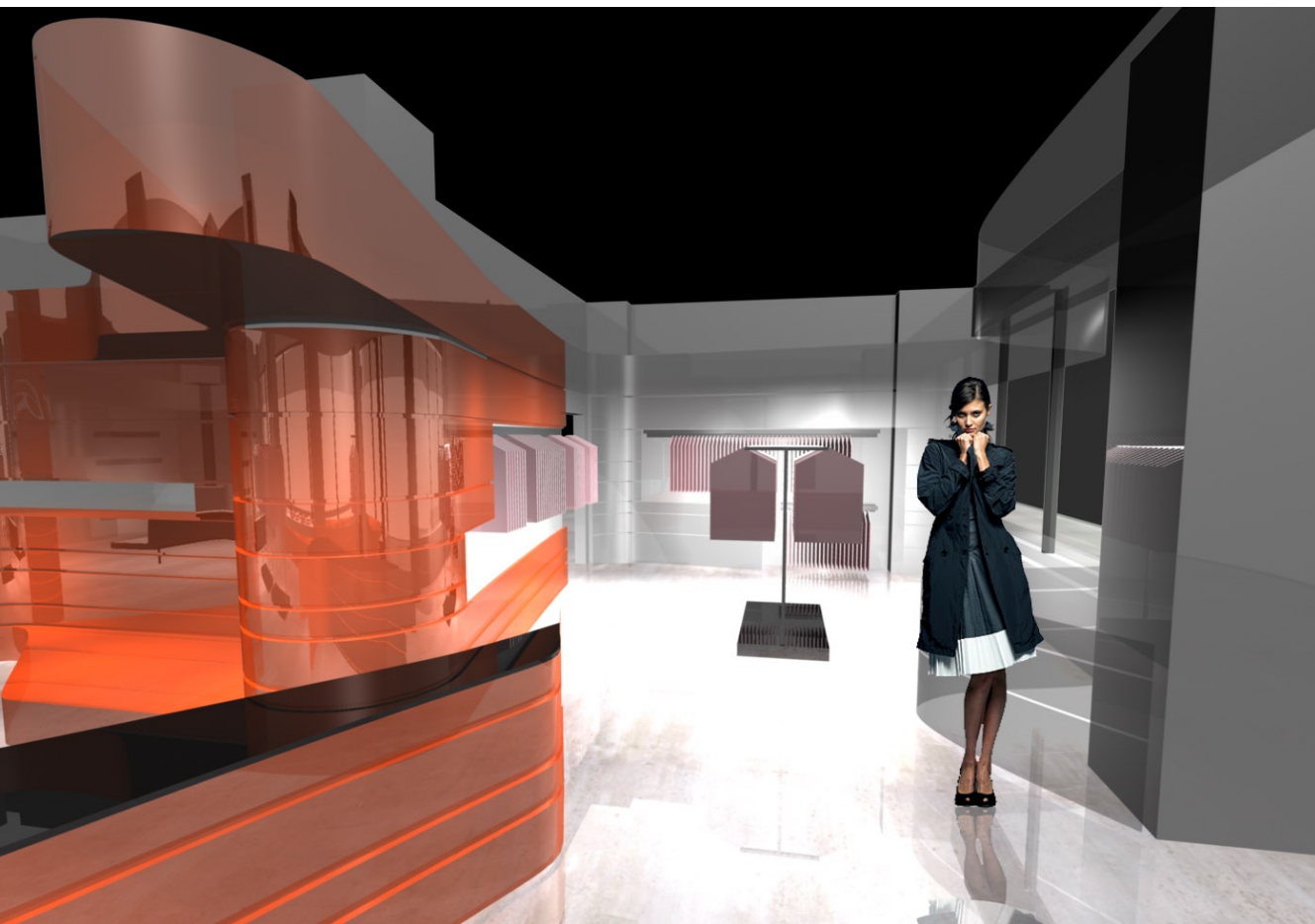
The Interior for Sorbus is designed to highlight its interior to its very prominent exterior site. The primary feature is an interior corner wrapper offset from the wall that undulates to create an enticing feature that can be seen from the outside Westminster shopping district. The wrapper, to be made from 3Form eco-resin and Maplex, will allow for special lighting and display zones as well as set of an entry cashwrap zone. The reminder of the space will feature Fleetwood fixtures and window box areas that will allow for display of the merchandise. TSA also designed and fabricated a temporary signage wrap for the windows prior to construction.

Location  
**Providence, RI**

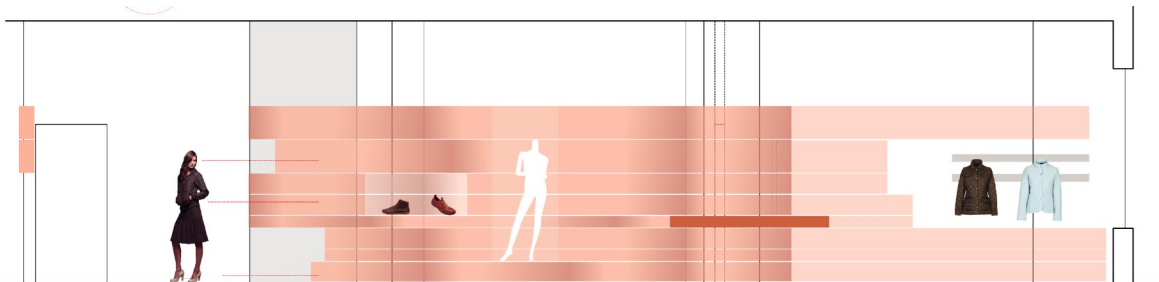
Date  
**2007**

Design Office  
**Thurlow Small Architecture with Julie Rose** Lighting Design

TSA Design Team  
**Maia Small, Andrew Thurlow, Brandon Massey, Nick Proto**







INTERIOR ELEVATION - SOUTH



# Westminster Project - Peerless Office Galleria, Providence, RI



The Galleria combines the historic logic of the shopping galleria and the new logic of the incubator office space into a new center for design and business in downtown Providence. The Peerless building was recently renovated and offers 7,600 s.f. of raw space to be further built into a series of very small spaces for offices and studios. Because these are for small or developing businesses, there are communal facilities that can provide meetings areas, lounge space for informal events, and kitchen facilities since each unit has little space and amenities. The urban goal is to spark economic growth that is based on local capability and entrepreneurial energy. Unlike large-scale offices that have been historically in downtown, this is meant to foster small creative offices, help build a sustainable network of enterprise and enhance all aspects of urban living and working.

Location  
**Providence, RI**

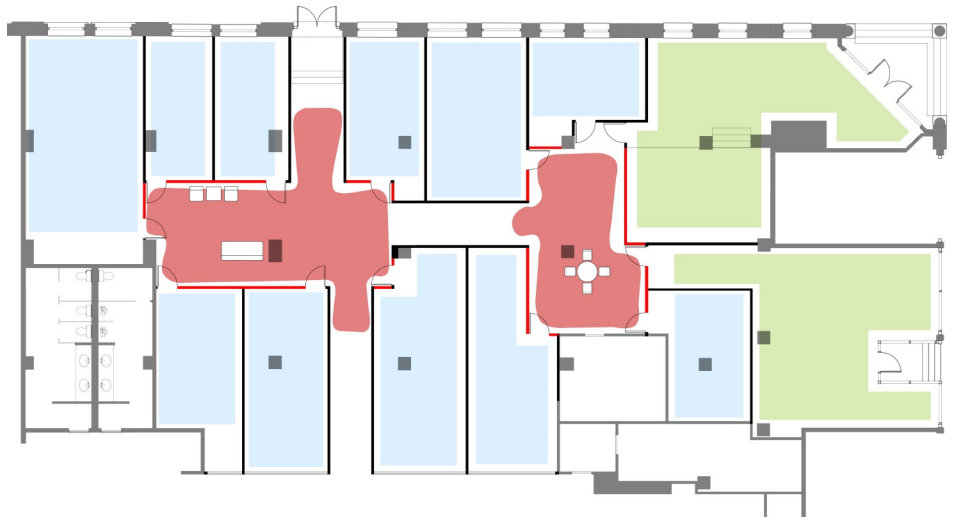
Date  
**2007**

Design Office  
**Thurlow Small Architecture**

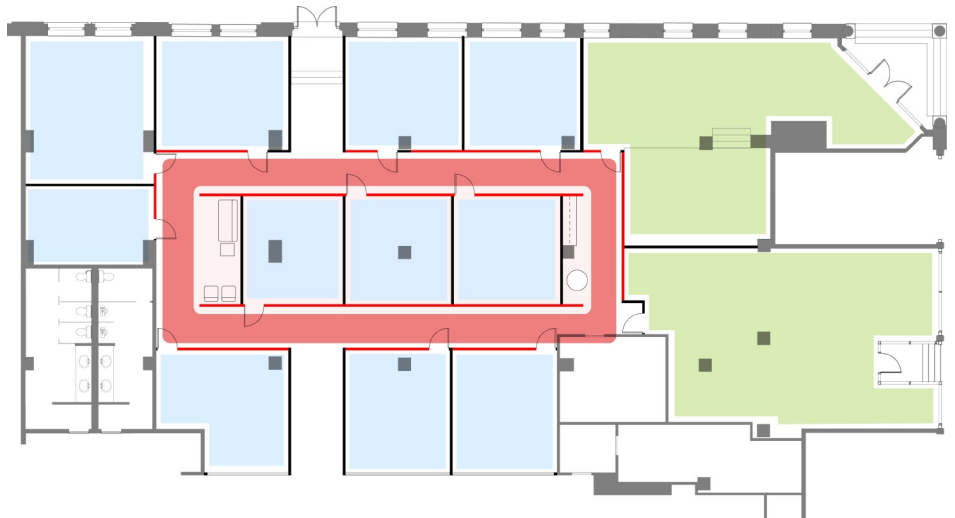
TSA Design Team  
**Maia Small, Andrew Thurlow, Nick Proto**



**Solid / Void Option**



**Racetrack Option**



**Wall Option**





# Westminster Project - Providence Market, Providence, RI



With the development of new housing and social life in downtown Providence, Cornish has proposed a new deli/grocery that fulfills the needs of both daytime and nighttime activity, beyond the franchise and packaged food available. The Providence market becomes a critical element in supporting the network structure of the city-- allowing people a place to cross over and more reasons to walk through the Westminster neighborhood.

The design of the market has been to project a sense of environment and action-- a sensibility-- that can entice a new tenant into the space. The idea is to use the notion of the multiple-- the repetition and variation inherent in a market to project through itself out into the urban atmosphere. The color and changing displays become an evolving transformation on the street. More literal connections between inside and outside is made by opening up seating to the outside through the storefront with tables and benches.

Location  
**Providence, RI**

Date  
**2007**

Design Office  
**Thurlow Small Architecture**

TSA Design Team  
**Maia Small, Andrew Thurlow, Nick Proto**

## Grocery Options

### Customers

RISD students  
JWU students  
People who work in downtown  
People who live in downtown  
Shoppers  
Tourists

### Activities

Get a morning coffee + baked good for breakfast  
Get a premade lunch and eat at inside/outside table  
Have sandwich made to order to go / eat it at on a bench  
Get a late day coffee to go  
Get food / drink supplies for office / post-work event  
Pick up a few fresh items at the end of the day

### Merchandise

Sandwiches, premade and made to order  
Basic groceries: butter, milk, cheese, bread, condiments  
Produce: fruit, vegetables, flowers  
Prepared foods  
Deli case with cold cuts  
Snacks: chips, nuts, pretzels  
Drinks: soda, water, juice, tea, specialty  
Coffee + espresso, fresh + supplies  
Baked goods, locally-made

### Competition

Whole Foods: grocery + lunch spot, not convenient  
Au Bon Pain: convenient + fresh, no grocery, more corporate  
Tazza: coffee + lunch spot, no grocery, for eating in  
7-11: convenient, no fresh made food, produce, deli counter  
Dunkin Donuts, convenient, not fresh, no grocery

