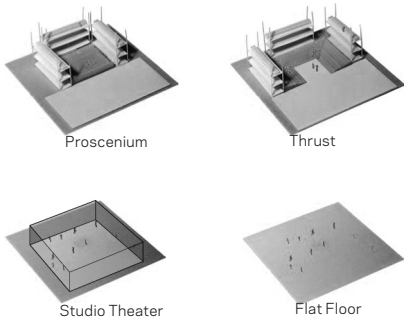


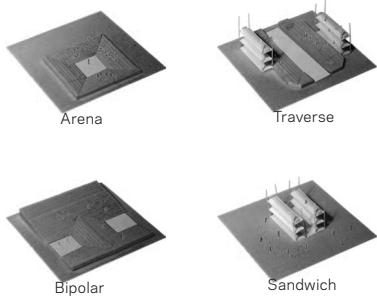
Flexible Seating and Stage

The diagram of Wyly Theater relies on the flexibility of the theater configuration to suit the needs of multiple productions and directors. Each characteristic of a production—type of seating, degree of light control, acoustic separation, and relationship to the city—can be controlled independently.

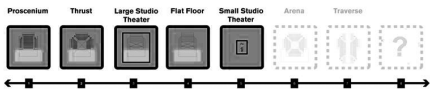
Mechanized



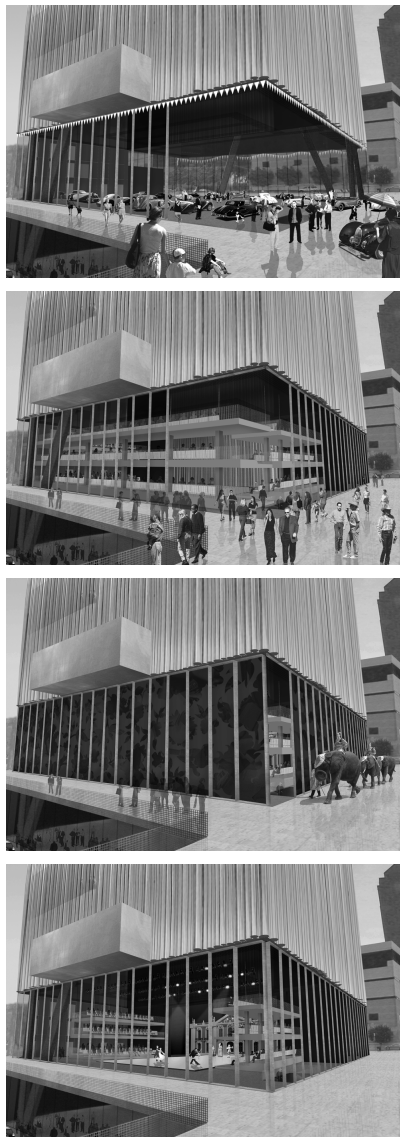
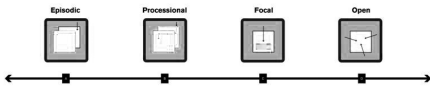
Hybrid Possibilities



multi-form



multi-procession



top left: Eight types of seating configurations.

top right: Diagram showing different stage configuration possibilities

left: Drawings of typical seating balconies designed for flexibility.

above: Sequence of renderings describing the opening of the ground floor façade to adapt to various types of performances.

facing page, top right: Photographs of aluminum tube façade mockup.

facing page, middle left: Early schematic rendering showing the façade.

facing page, bottom: Drawings of the aluminum tube types used for the façade.